



# ***How to Install the Qualcomm 64-Bit Windows 7 USB Host Driver***

***User Guide***

***80-N2328-2 B***

***April 18, 2011***

**Submit technical questions at:**  
<https://support.cdmatech.com/>

**Qualcomm Confidential and Proprietary**

**Restricted Distribution.** Not to be distributed to anyone who is not an employee of either Qualcomm or a subsidiary of Qualcomm without the express approval of Qualcomm's Configuration Management.

Not to be used, copied, reproduced in whole or in part, nor its contents revealed in any manner to others without the express written permission of Qualcomm.

Qualcomm reserves the right to make changes to the product(s) or information contained herein without notice. No liability is assumed for any damages arising directly or indirectly by their use or application. The information provided in this document is provided on an "as is" basis.

This document contains Qualcomm confidential and proprietary information and must be shredded when discarded.

QUALCOMM is a registered trademark of QUALCOMM Incorporated in the United States and may be registered in other countries. Other product and brand names may be trademarks or registered trademarks of their respective owners. CDMA2000 is a registered certification mark of the Telecommunications Industry Association, used under license. ARM is a registered trademark of ARM Limited. QDSP is a registered trademark of QUALCOMM Incorporated in the United States and other countries.

This technical data may be subject to U.S. and international export, re-export, or transfer ("export") laws. Diversion contrary to U.S. and international law is strictly prohibited.

**QUALCOMM Incorporated  
5775 Morehouse Drive  
San Diego, CA 92121-1714  
U.S.A.**

**Copyright © 2010-2011 QUALCOMM Incorporated.  
All rights reserved.**

# Contents

---

<b>1 Introduction.....</b>	<b>5</b>
1.1 Purpose.....	5
1.2 Scope.....	5
1.3 Conventions .....	5
1.4 References.....	5
1.5 Technical assistance.....	6
1.6 Acronyms.....	6
<b>2 Installation.....</b>	<b>7</b>

## Tables

Table 1-1 Reference documents and standards.....	5
--	---

QUALCOMM®  
2011.11.08 at 23:18:12 PST  
wxiong-waterworld.com.cn

## Revision history

Revision	Date	Description
A	Sep 2010	Initial release
B	Apr 2011	Updated path to install the Windows host driver

QUALCOMM®  
2011.11.08 at 23:18:12 PST  
wxiong-waterworld.com.cn

# 1 Introduction

---

## 1.1 Purpose

The purpose of this document is to provide installation instructions for the Qualcomm 64-bit Windows 7 USB host driver.

## 1.2 Scope

This document applies to any user who needs to install the Qualcomm 64-bit Windows 7 USB host driver.

## 1.3 Conventions

Function declarations, function names, type declarations, and code samples appear in a different font, e.g., `#include`.

Code variables appear in angle brackets, e.g., `<number>`.

Commands to be entered appear in a different font, e.g., `copy a:*. * b:.`

Button and key names appear in bold font, e.g., click **Save** or press **Enter**.

Shading indicates content that has been added or changed in this revision of the document.

## 1.4 References

Reference documents, which may include QUALCOMM®, standards, and resource documents, are listed in [Table 1-1](#). Reference documents that are no longer applicable are deleted from this table; therefore, reference numbers may not be sequential.

**Table 1-1 Reference documents and standards**

Ref.	Document	
Qualcomm		
Q1	Application Note: Software Glossary for Customers	CL93-V3077-1

## 1.5 Technical assistance

For assistance or clarification on information in this guide, submit a case to Qualcomm CDMA Technologies at <https://support.cdmatech.com/>.

If you do not have access to the CDMATech Support Service website, register for access or send email to [support.cdmatech@qualcomm.com](mailto:support.cdmatech@qualcomm.com).

## 1.6 Acronyms

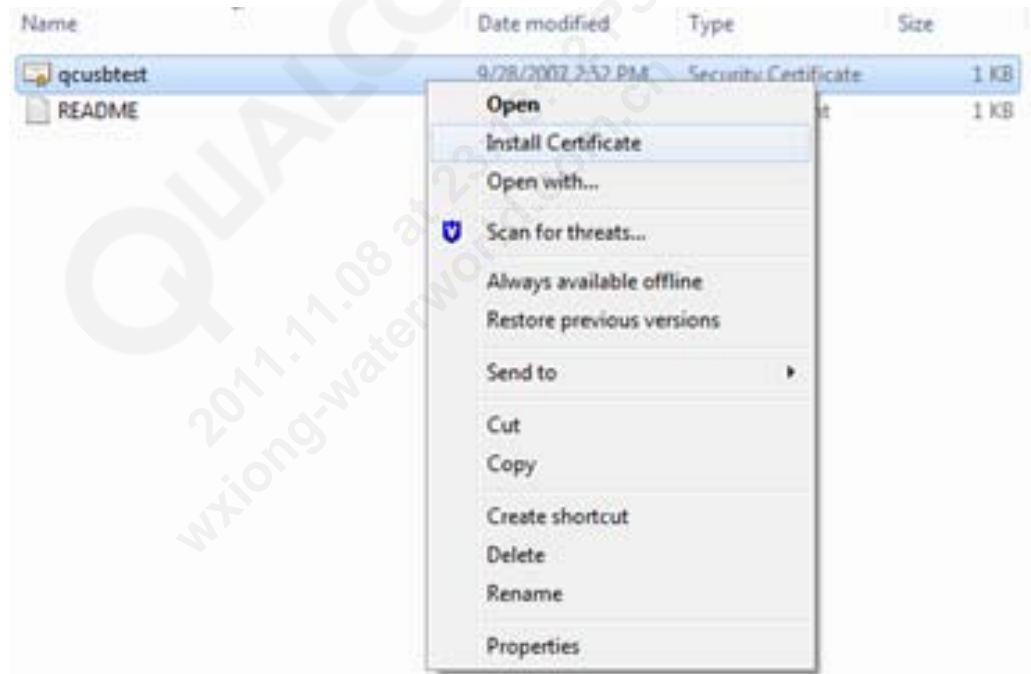
For definitions of terms and abbreviations, see [Q1].

## 2 Installation

---

Follow the steps in this chapter to install the Qualcomm 64-bit Windows 7 USB host driver.

1. To add the test certificate:
  - a. Launch Windows Explorer.
  - b. Navigate to the **qcusbtest.cer** certificate file.
  - c. Right-click the file and select **Install Certificate**.



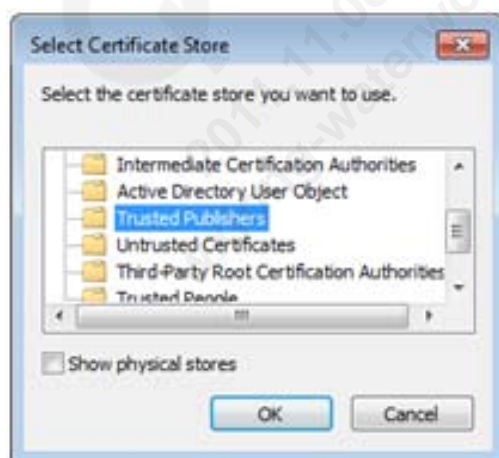
The Certificate Import Wizard dialog appears.

- d. In the Certificate Import Wizard dialog, click **Browse**.



The Select Certificate Store dialog appears.

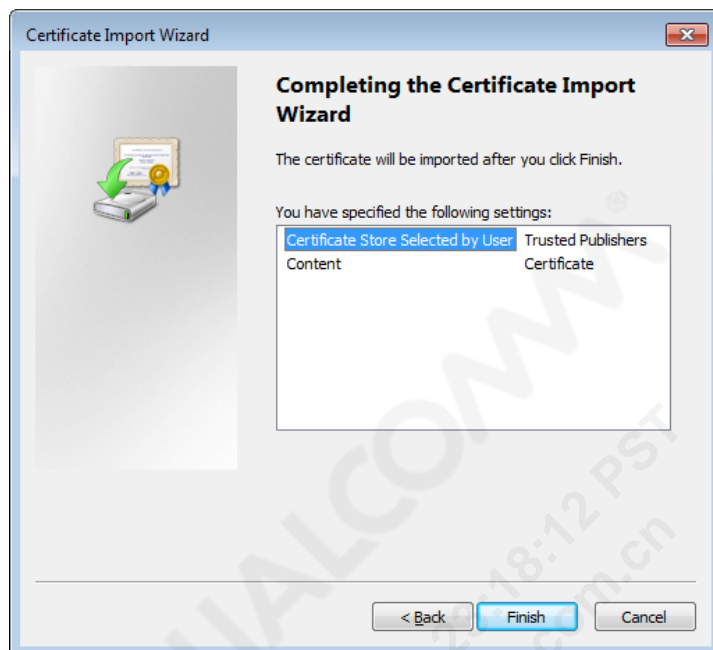
- e. From the Select Certificate Store dialog, select **Trusted Publishers**.





- f. Click **OK**.

The Certificate Import Wizard dialog appears.

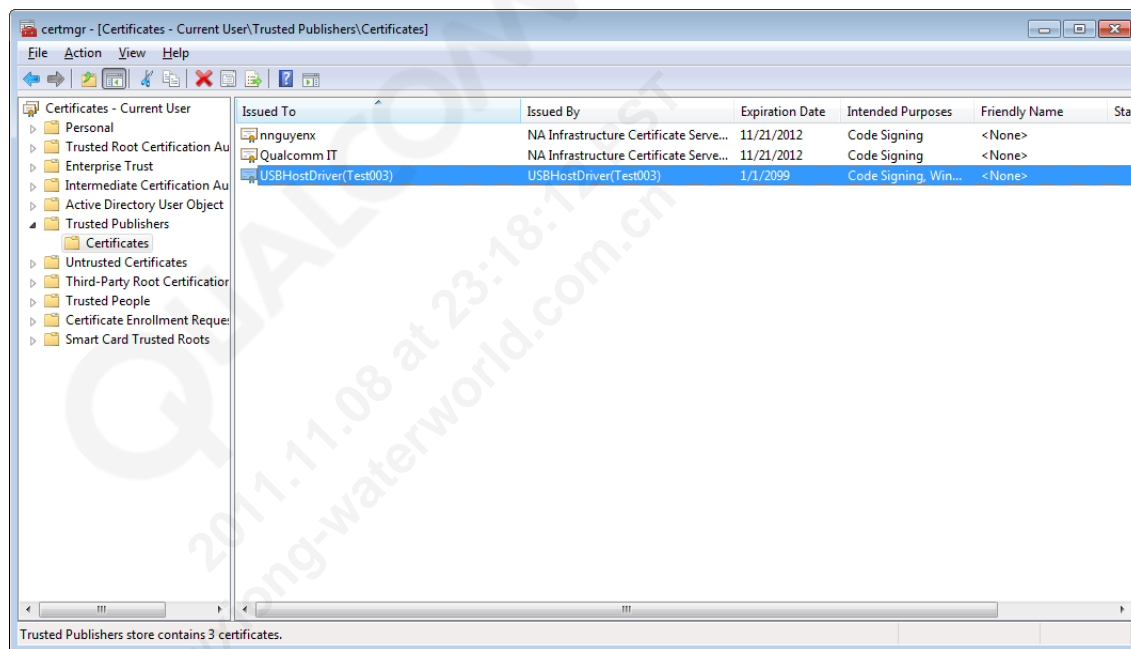


- g. Ensure that the certificate is displayed in the **You have specified the following settings** pane of the Certificate Import Wizard dialog.
- h. Click **Finish** to add the test certificate.
2. To add Trusted Root Certification Authorities:
- a. In Windows Explorer, navigate to the **qcusbtest.cer** certificate file.
- b. Right-click and select **Install Certificate**.
- The Certificate Import Wizard dialog appears.
- c. In the Certificate Import Wizard dialog, click **Browse**.
- The Select Certificate Store dialog appears.
- d. Select **Trusted Root Certification Authorities**, and click **OK**.



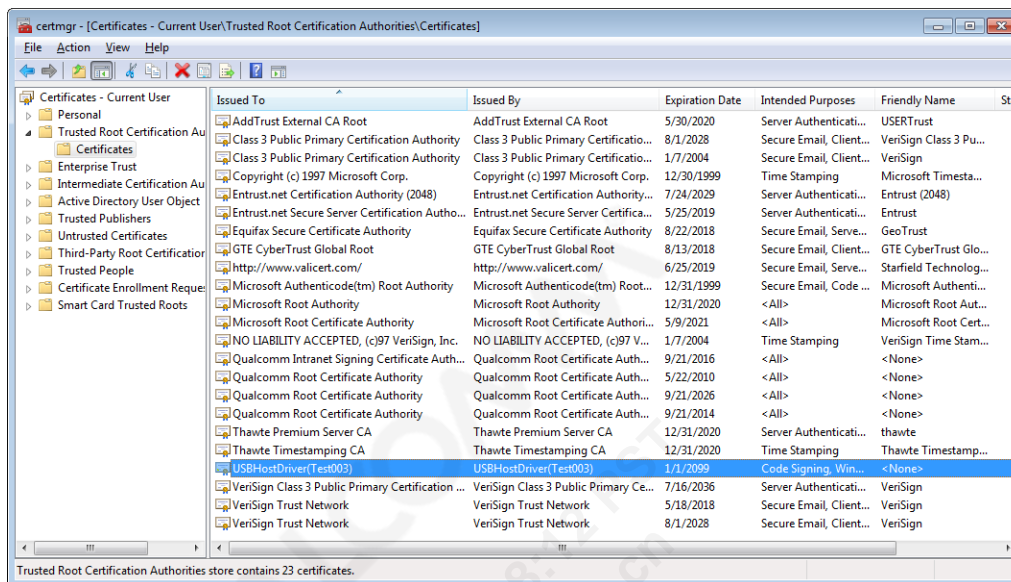
The Certificate Import Wizard dialog appears.

- e. In the Certificate Import Wizard dialog, ensure that the certificate is displayed in the **You have specified the following settings** pane.
  - f. Click **Finish**.
- Trusted root certification authorities are added.
3. To confirm the test certificate:
    - a. Click **Start** → **Run**.
    - b. Enter **certmgr.msc** to start the Certificate Manager.The certmgr window appears.
  - c. Verify that the test certificate is present in the Trusted Publishers/Certificates folder.



- d. Navigate to the Trusted Root Certification Authorities folder.

- e. Verify that the test certificate is present in the Trusted Root Certification Authorities/Certificates folder.



4. Open the command prompt window, using the **Run as administrator** option.

5. Enter the following command: `bcdedit -set testsigning on`.

6. Reboot the system.

7. After reboot, attach the QC USB device to the system.

The system device manager enumerates the devices and requests the location of the host drivers.

8. Based on the system environment variable `PROCESSOR_ARCHITECTURE`, install the Windows host driver in the `...\Win64` location.

Windows 7 might not prompt for the driver installation when a USB device is plugged in. In this case, open the device manager and manually install a driver for each device instance.