

# Guide for Writing MEID / IMEI

## Contents

1. Equipment required
2. Notice
3. Installation
4. Writing MEID / IMEI

# 1. Equipment required

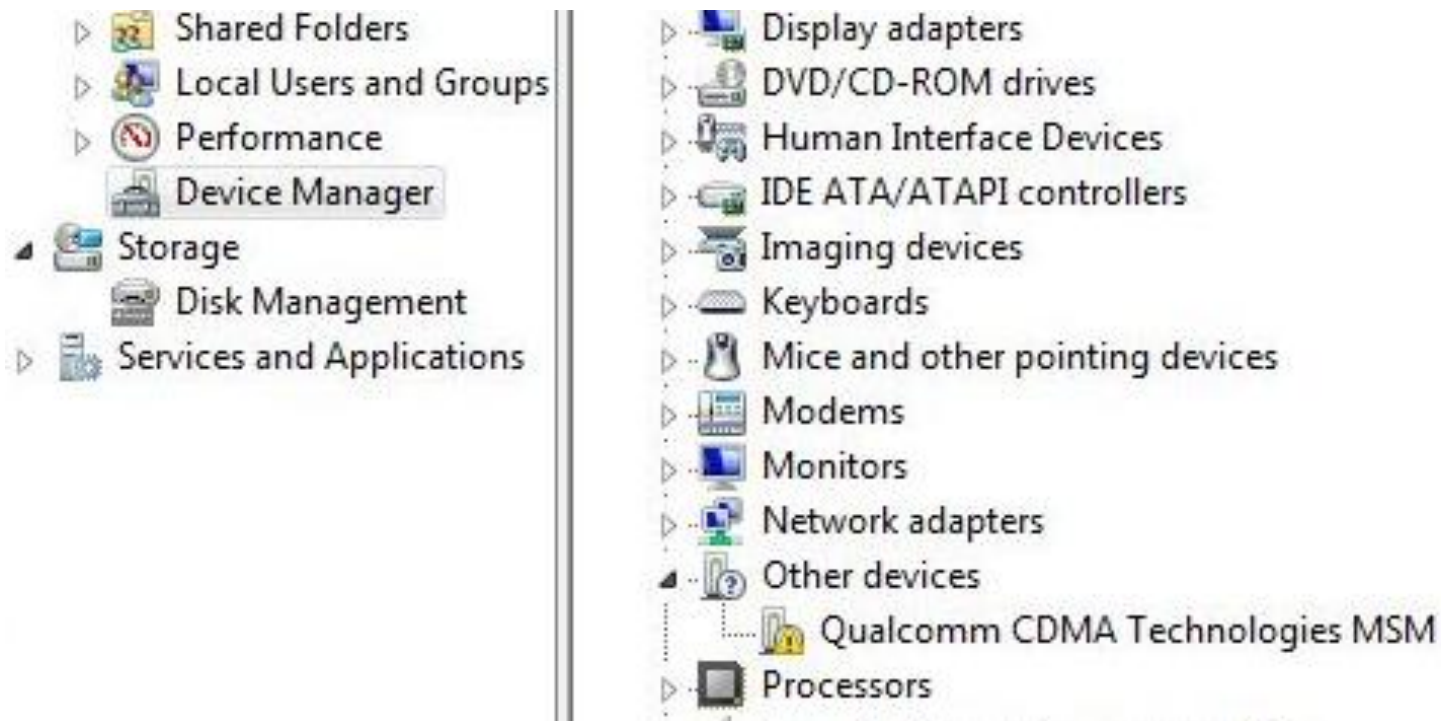
item	Description
① Computer	To install driver/ upgrade SW
② Tool	OEM_MEID_Writer(1.0.0.9)_Setup
③ Data cable	5pin Micro USB cable
④ OS supported	Windows 2000/XP/Vista/ Seven
⑤ Driver	QSC1105_USB_Driver

## 2.Notice

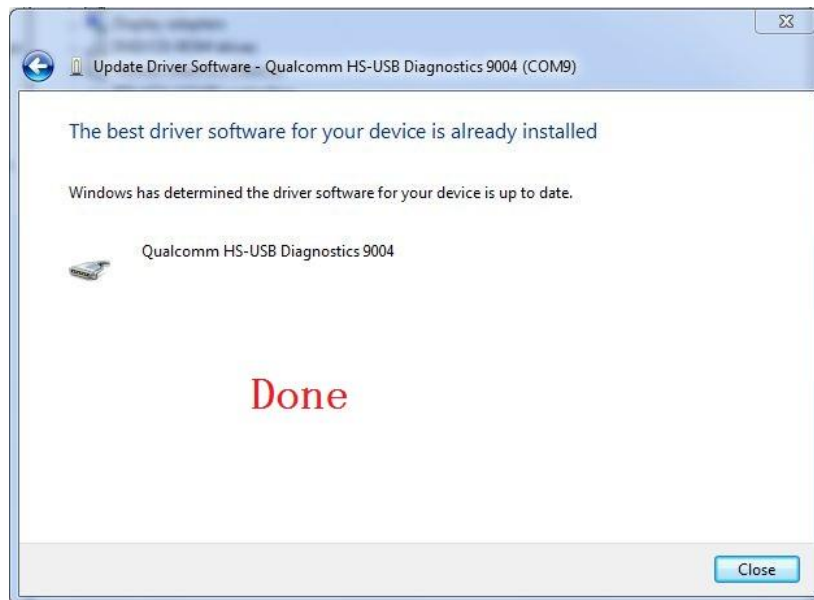
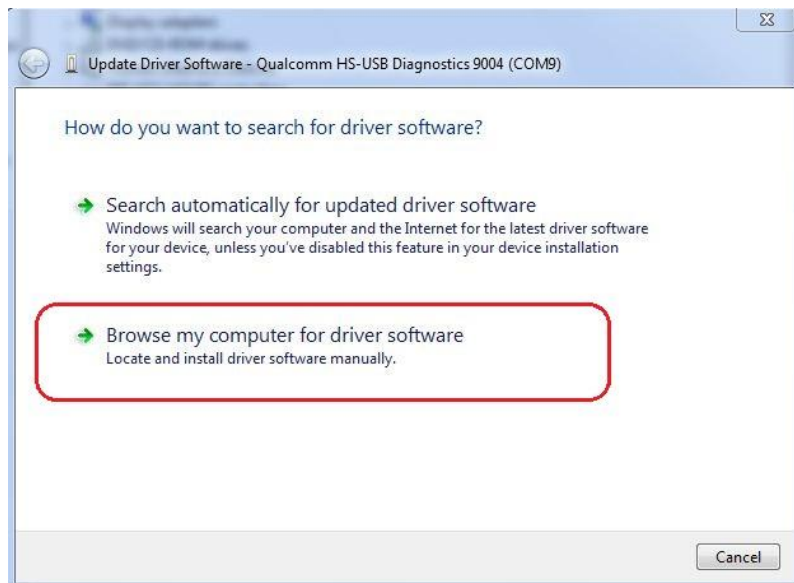
- **Do not** disconnect USB cable when writing the MEID / IMEI.
- If you change to use other USB port or another PC, please check the COM port No. first.

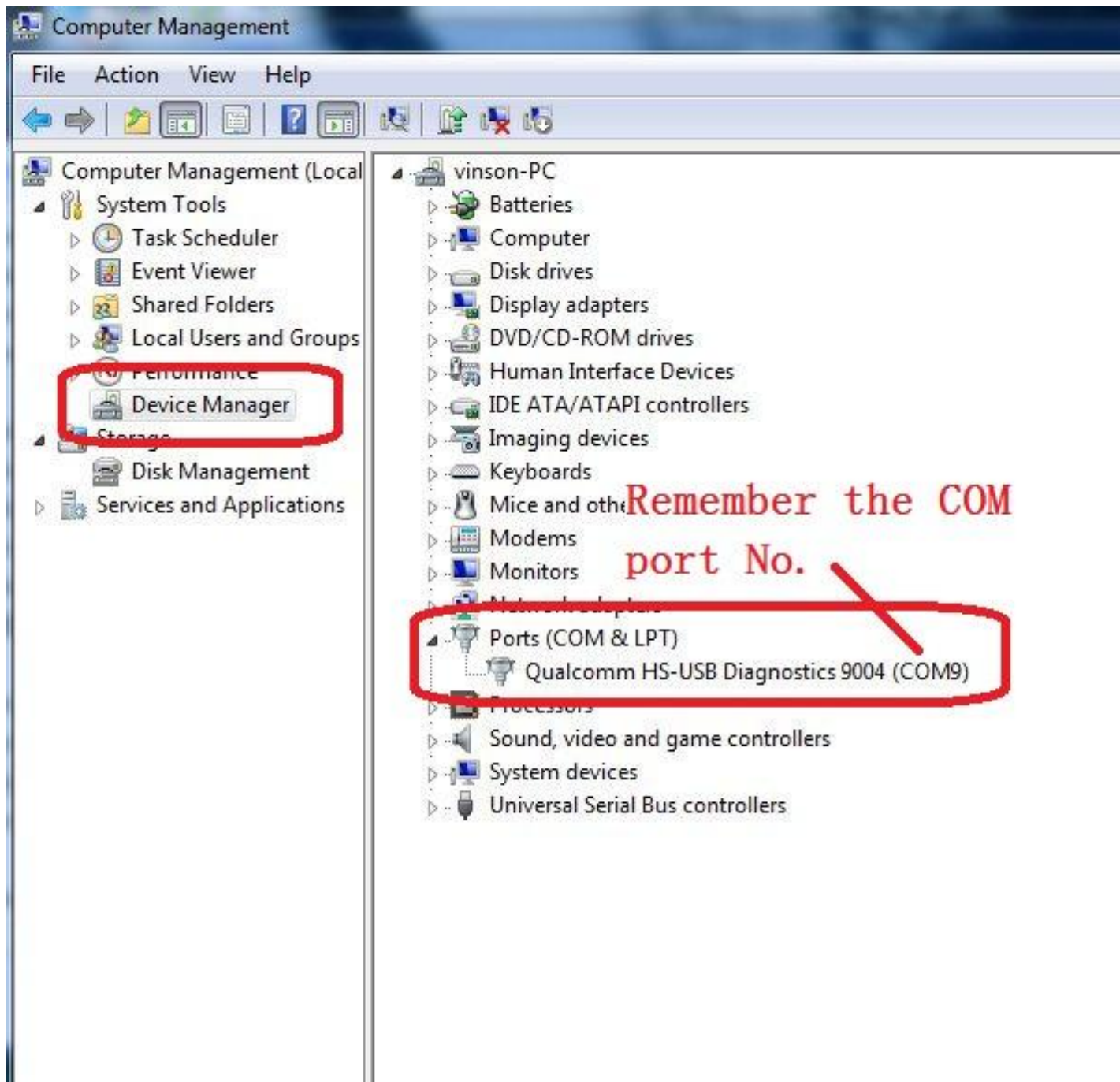
# 3. Installation

- Install QSC1105 driver (the folder “QSC1105\_USB\_Driver”) first when you first time connect the phone with PC
  1. ---Device Manager---find “other devices” or yellow mark



## 2. Install the driver as these step:

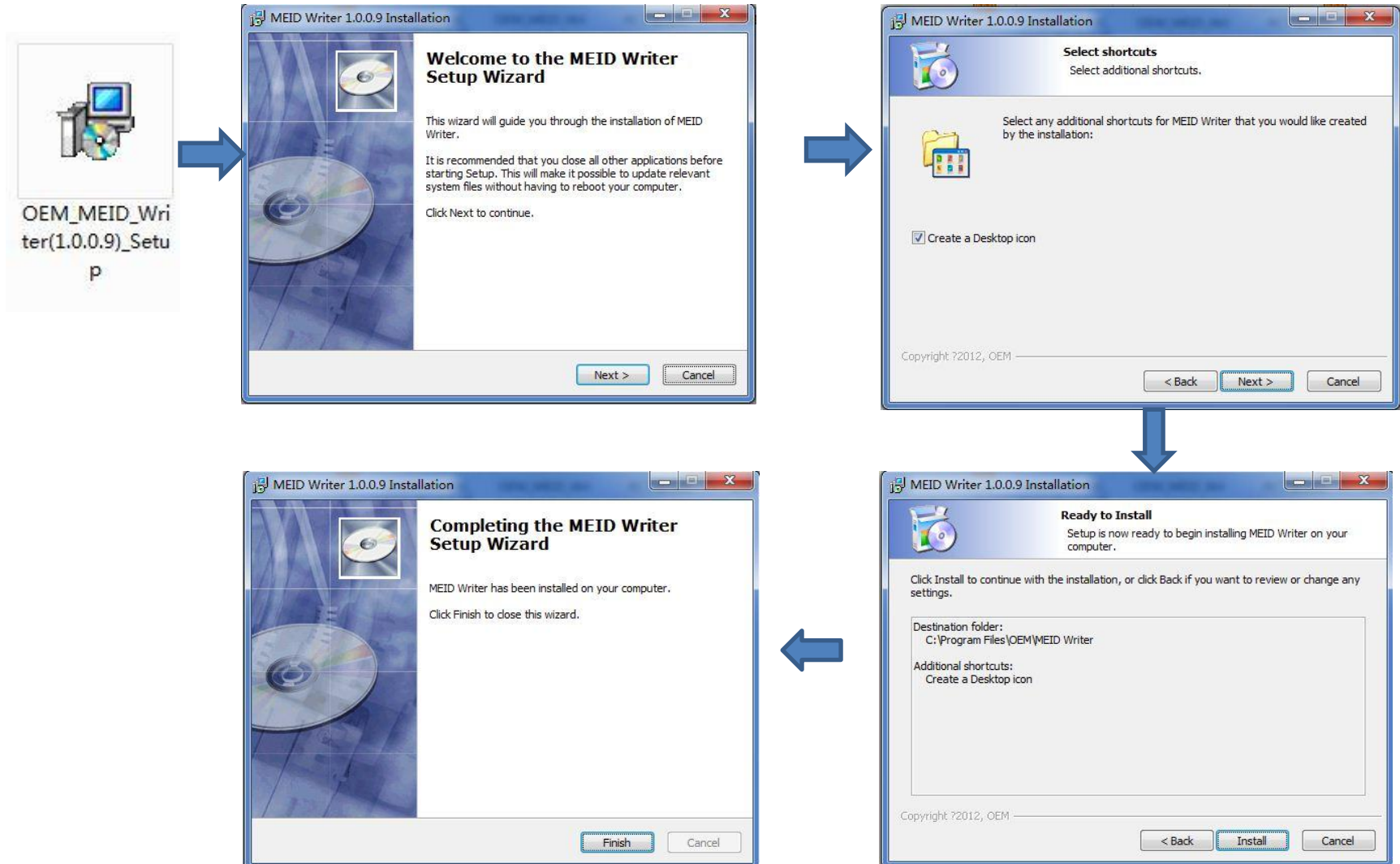




Remember  
the COM  
No. in  
Device  
manager

Remember the COM  
port No.

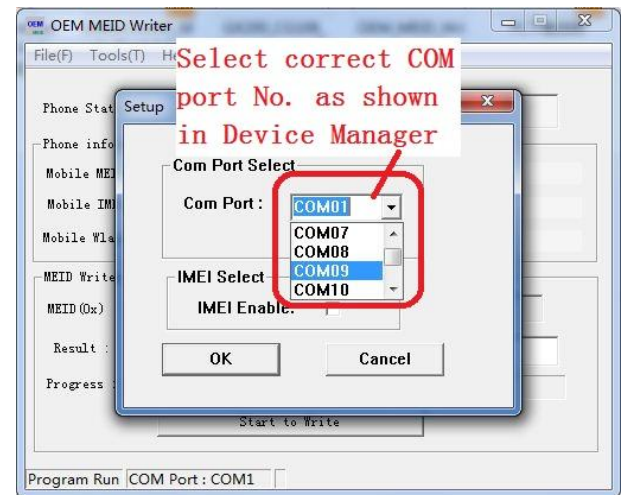
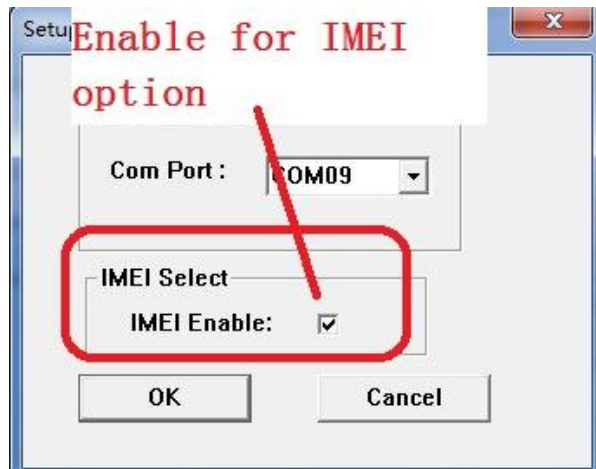
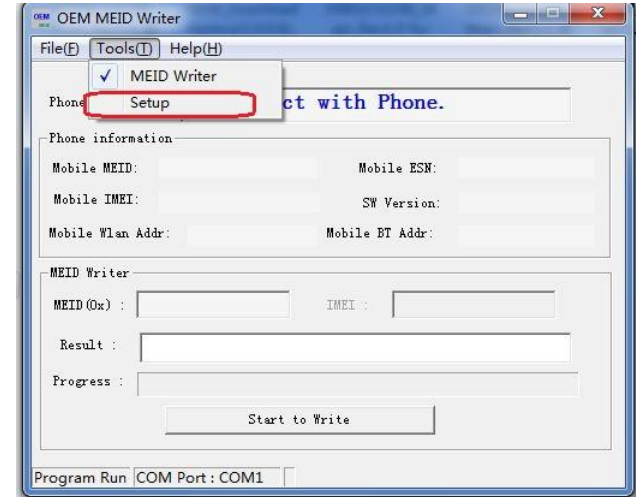
- Secondly, install the tool which named “OEM\_MEID\_Writer(1.0.0.9)\_Setup” following the steps as below:



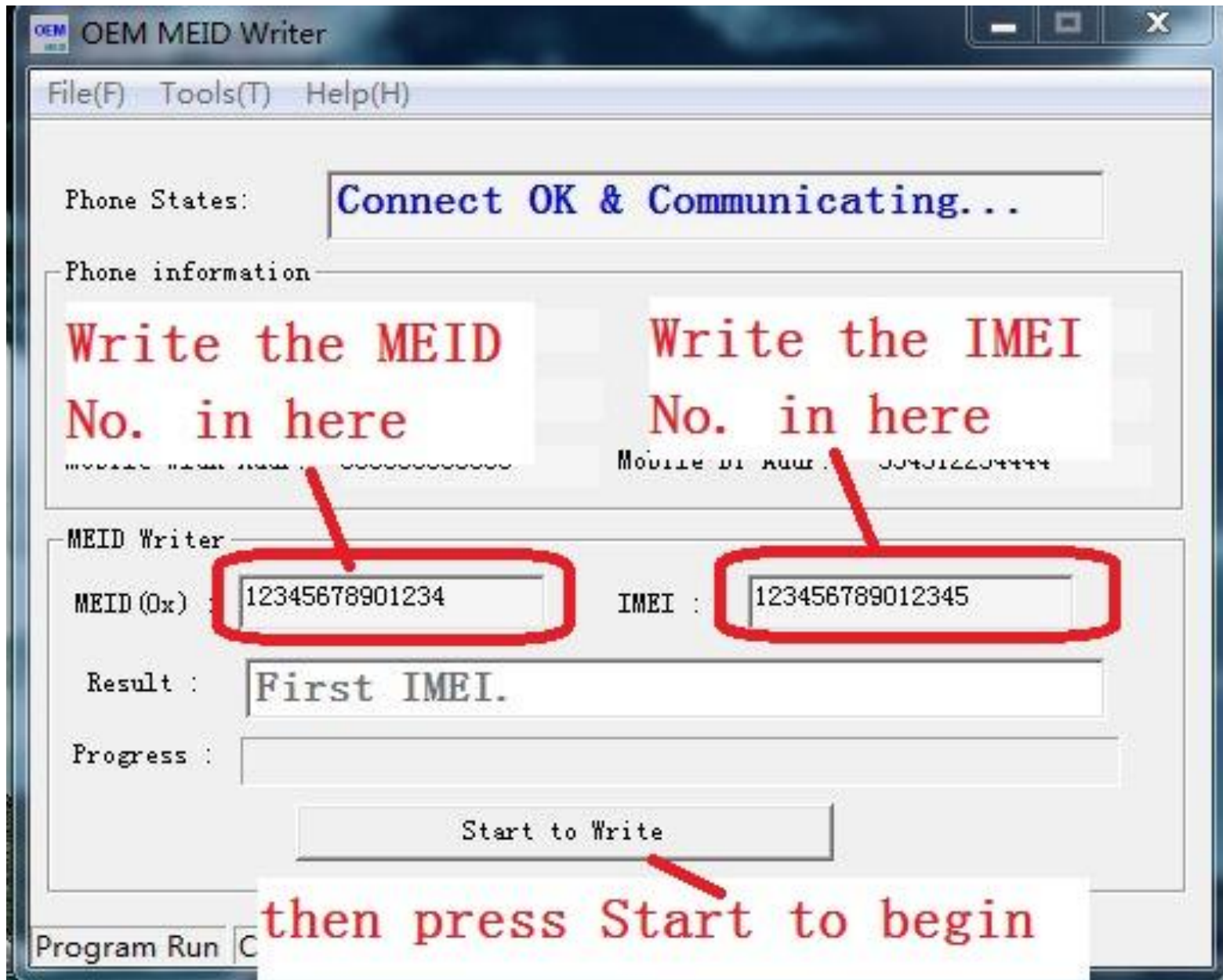


# 4. Writing MEID /IMEI

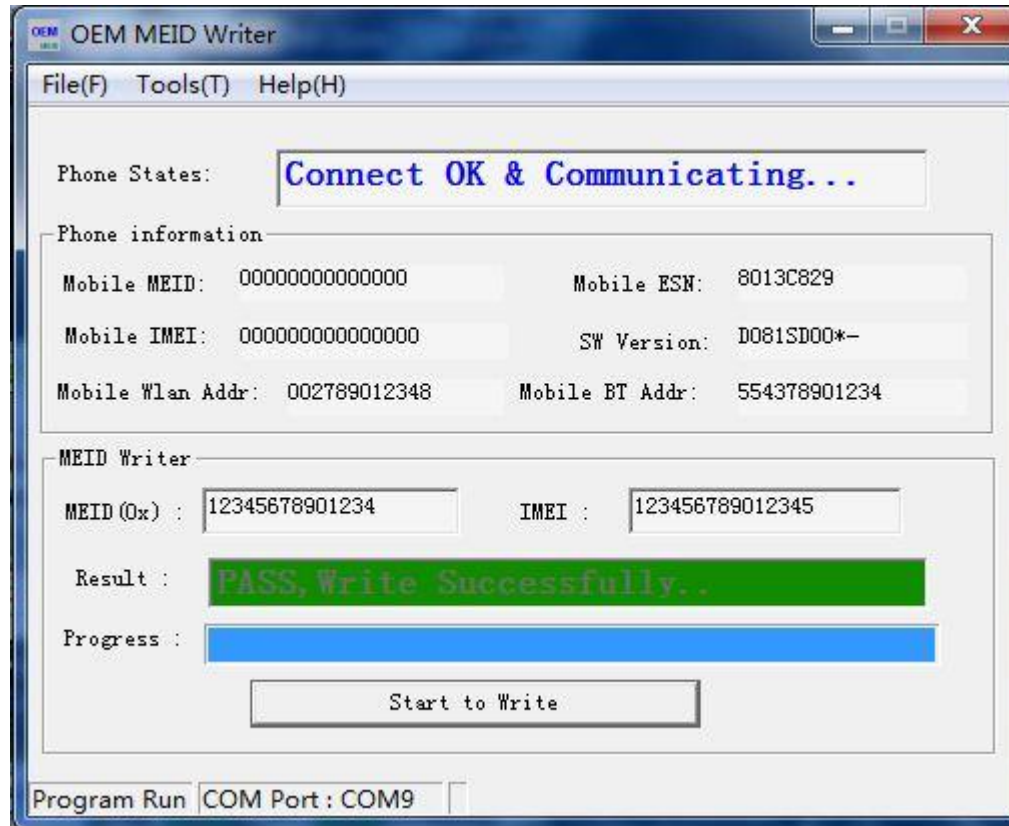
Double click the Icon  
in the desktop







The handset will reboot automatically when it finish to write MEID & IMEI



**Done**