

EMMC Multiple Download Tool Instructions

V1.1

YEP Confidential

Contents

1	Purpose.....	3
2	Scope	3
3	Driver Install	3
3.1	Welcom.....	4
3.2	Install Process	5
3.3	Driver Warning	5
3.4	Driver Finish.....	6
4	Procedure	6
4.1	Program Install.....	6
4.2	System Connect	6
4.3	Run Program.....	6
5	Install Considerations	7
6	Download Configure.....	7
6.1	Path Configure	7
6.2	Port Configure.....	8
7	Download Process	11
8	Test Result.....	12
9	FAQ	14

YEP Confidential

1 Purpose

This document is Qualcomm platform EMMC multiple download tool operating instructions. Applicable to HQXA_CustomerDL_EMMC_V *. *. * And subsequent upgrade version, If the document version has updated to the latest version shall prevail.

2 Scope

Download the program applies to support Qualcomm support EMMC smartphone, Use the relevant operator to upgrade the software for updates. This guidance document is intended for customers to upgrade to guide use.

3 Driver Install

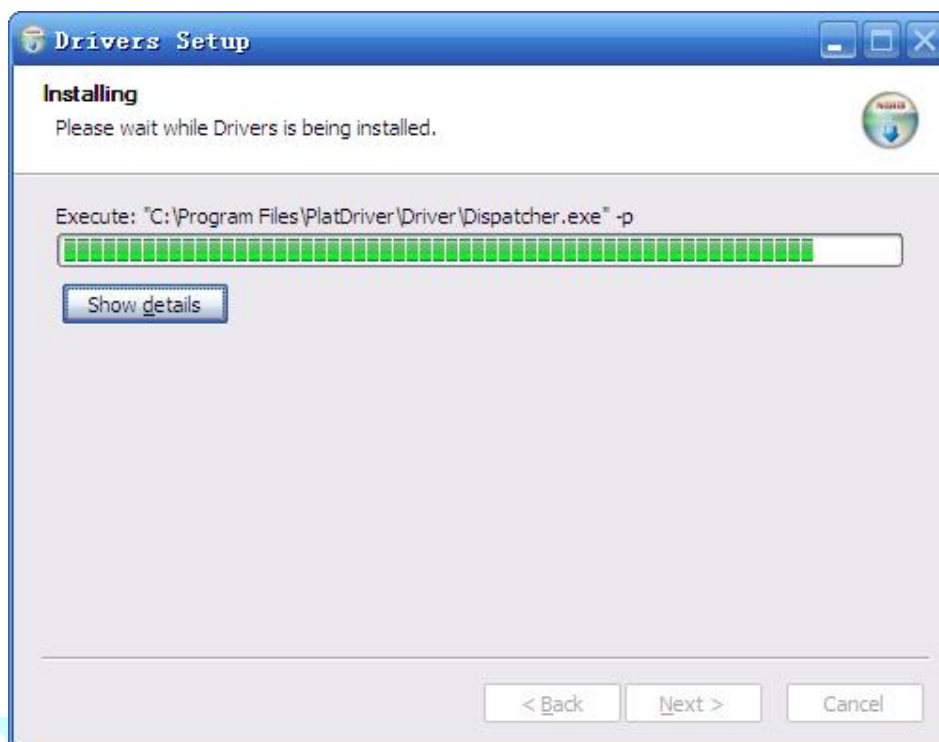
Unzip drive directory Driver all-in-one.rar, Run hwdriverinstall.exe, Proceed as follows:

3.1 Welcome



Pic 1

3.2 Install Process



Pic 2

3.3 Driver Warning

Driver is not certified WHQL, The first installation will show the following dialog box, Please click still proceed with the installation. the installation process to support multi-port, Will Tip many times.



Pic 4

3.4 Driver Finish



Pic 5

After the installation is complete, the drive will need to restart the computer drives can automatically take effect.

4 Procedure

4.1 Program Install

The program can decompress compressed files used.

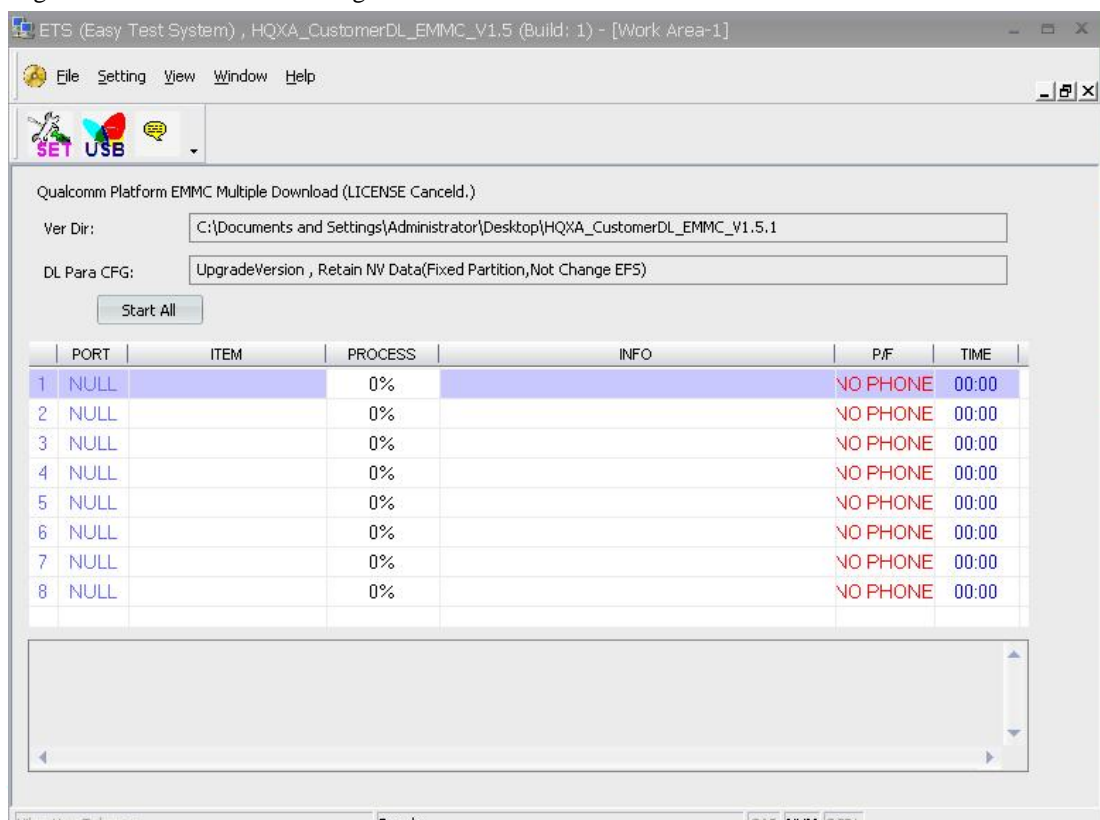
4.2 System Connect

PC through the USB port and the phone connection and to be upgraded.

4.3 Run Program

Run “ets.startrun.exe” Program。program will starts normal.

Login: Interface will show in Figure 1.。



Pic 6

The default Port is NULL, After configure, You can use the Download tools.

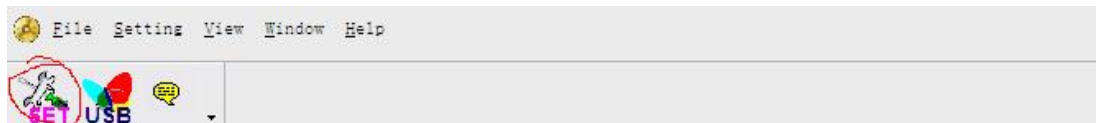
5 Install Considerations

- (1) Driver has been properly installed - Please refer to the driver installation 3.
- (2) Do not insert the SD card (T card) in phone before upgrade.
- (3) Do not open other tools used Diag Port.for QPST.
- (4) No open Log engineering instruction, If open, Please close, Engineering instruction:
####7878#和####8787#

6 Download Configure

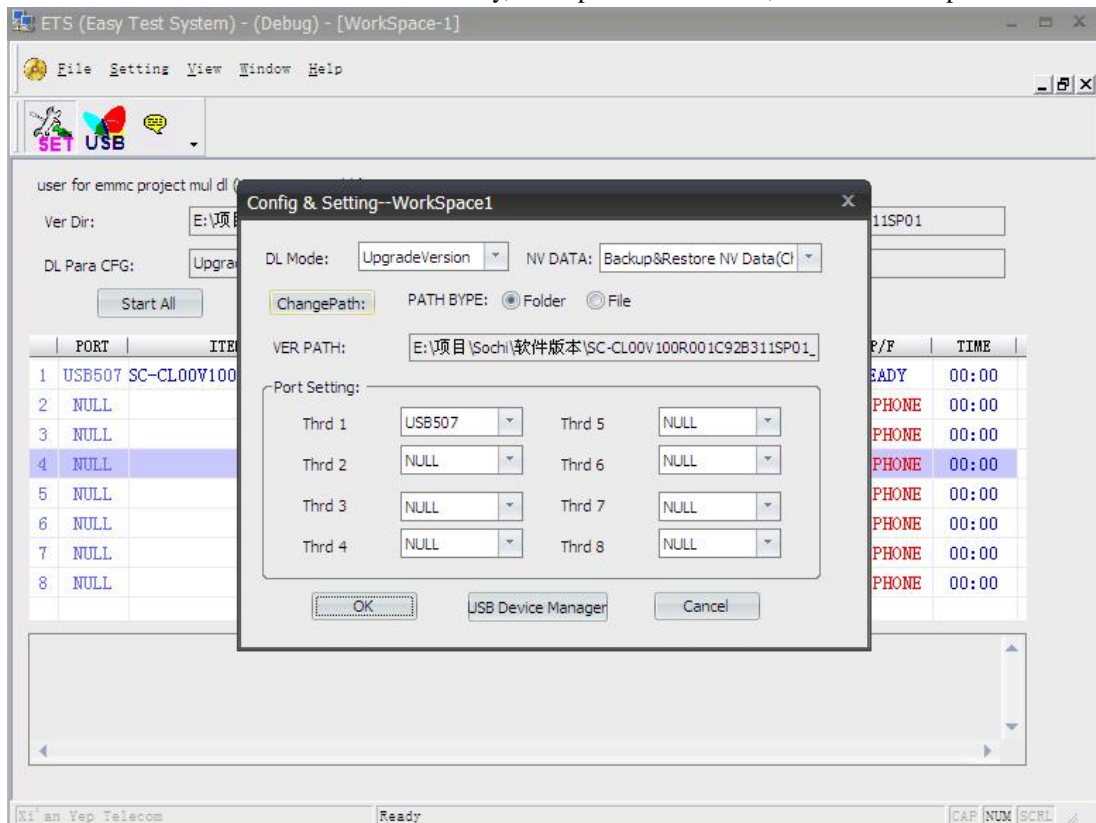
6.1 Path Configure

The need for the path and port software to configure the software after the open, Figure 2:



Pic 7

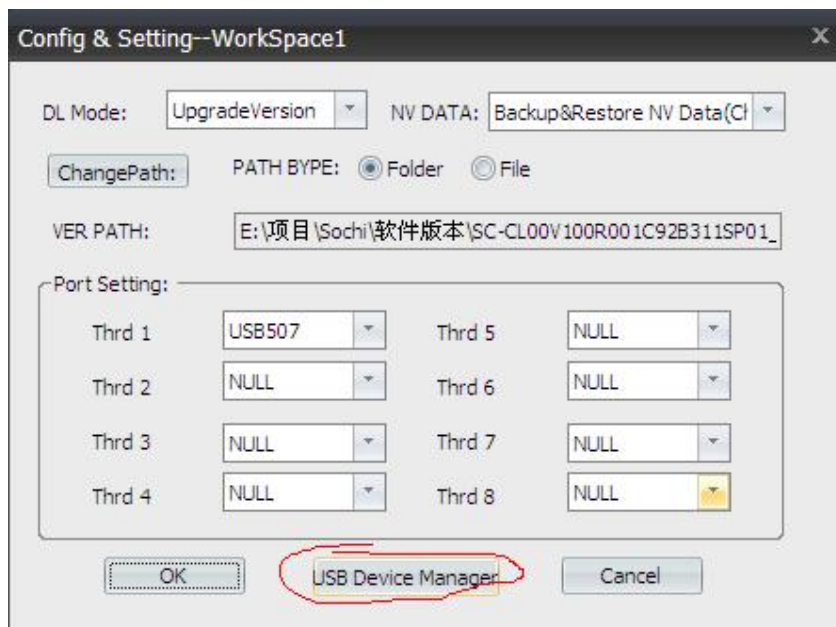
Select the software version of the root directory, if the path is not correct, download tooltip error.



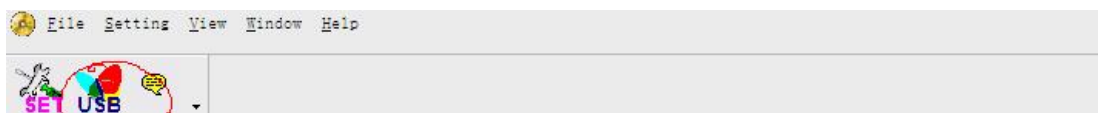
Pic 8

6.2 Port Configure

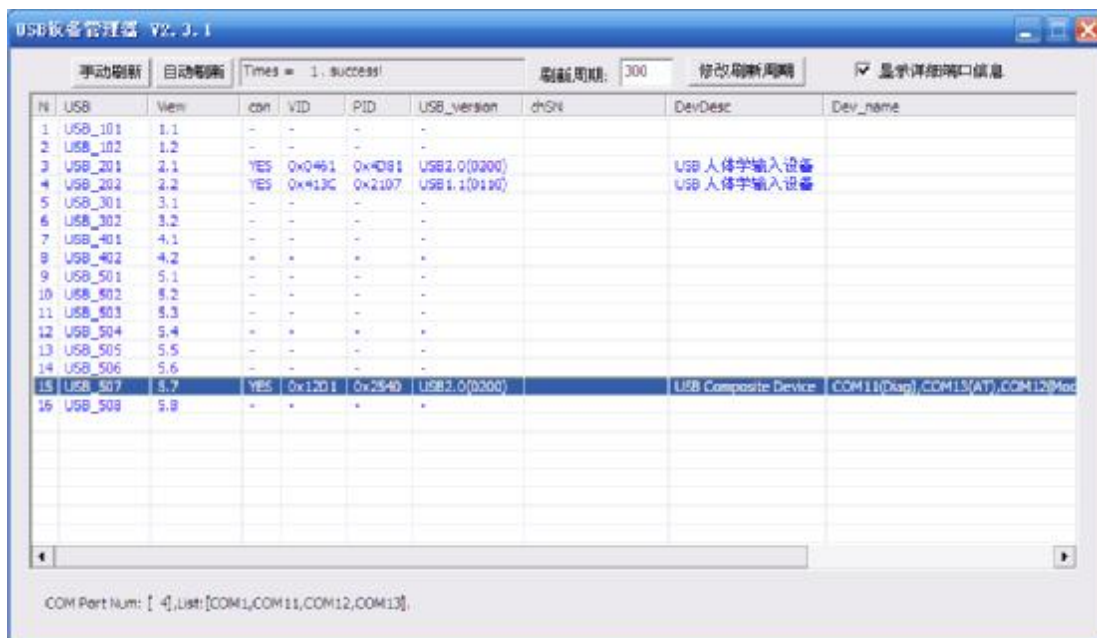
The tools need to configure the USB port number, and the corresponding need to use the USB Device Manager tool to view the USB port. Point in the parameter configuration dialog "USB Device Manager" button in the main interface point or "USB" toolbar icon can start a USB device manager (Figure 9, Figure 10, Figure 11).



Pic 9



Pic 10



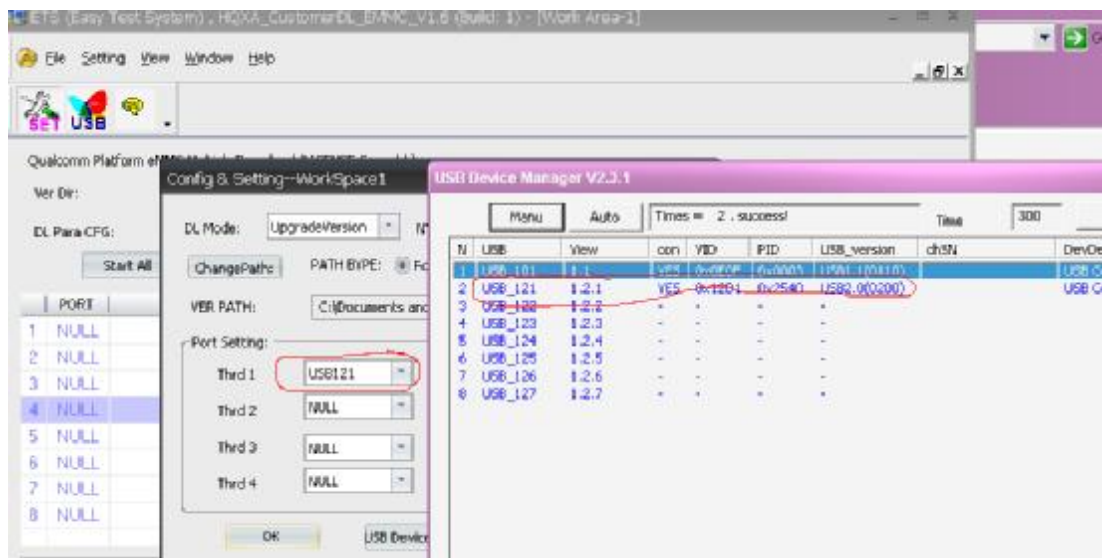
Pic 11

Select auto-refresh mode, each insert a cell phone, the USB Manager will appear in a line of new equipment, USB device port number information in front of the line in the second column shows that is

14	USB_506	5.6	-	-	-	-		
15	USB_507	5.7	YES	0x12D1	0x2540	USB2.0(0200)		USB Composite Device ,COM11(Diag),COM13(AT),COM12(Mod
16	USB_508	5.8	-	-	-	-		

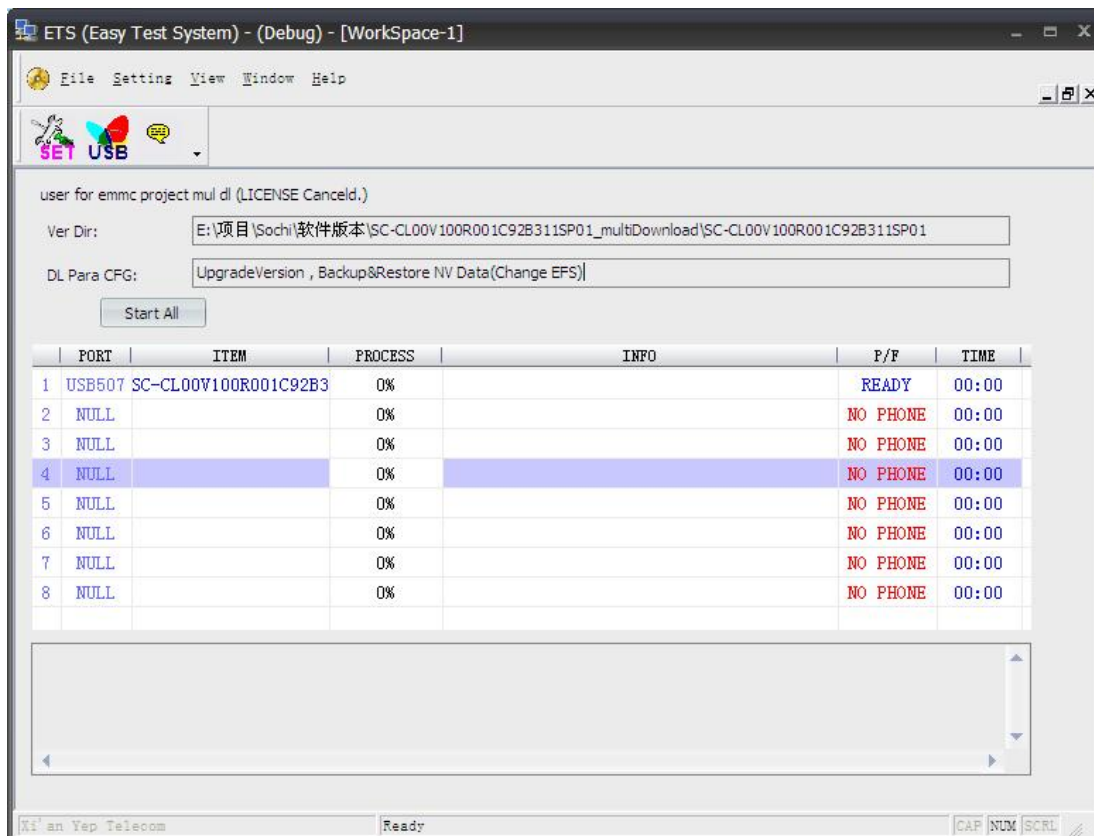
Pic 12

the second column shows the front of USB_121, software configuration parameters in the corresponding thread number list of port numbers behind the dialog to select USB121.as follow 13.



Pic 13

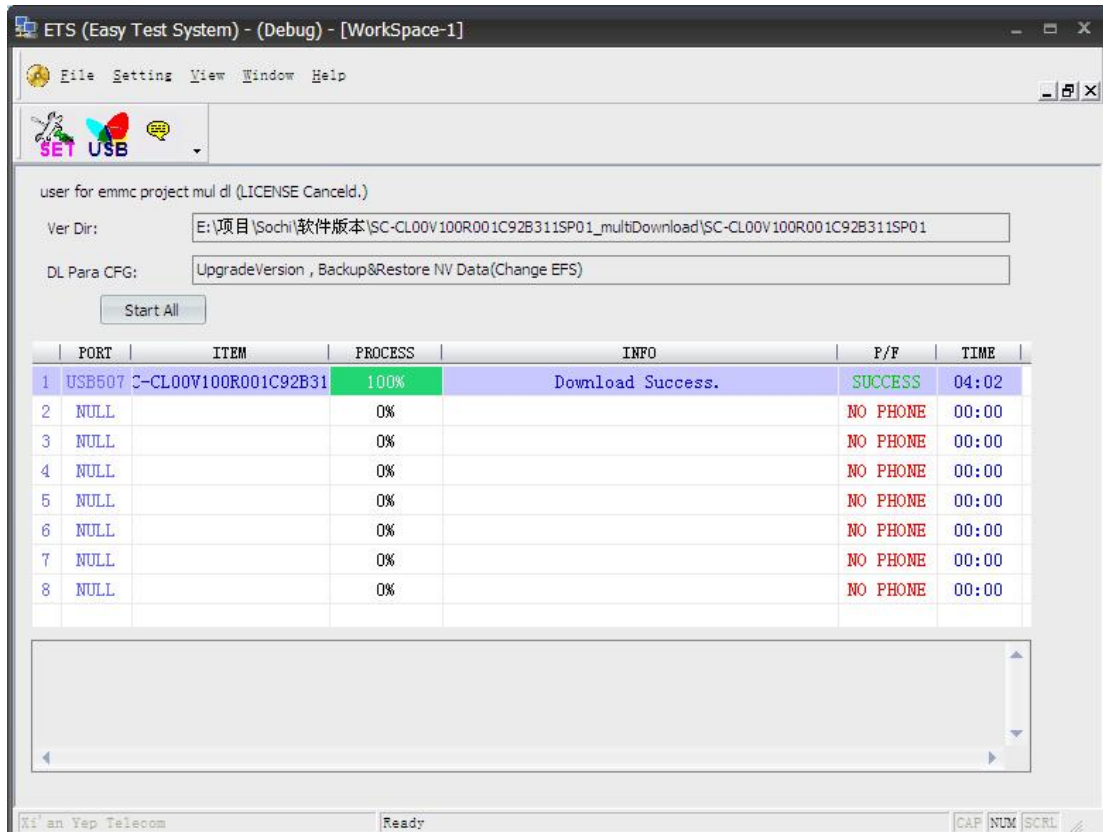
7 Download Process



Pic 13

After you configure the path and port directly point the main interface "Start All" button to start the download process. You can also double-click the left mouse button to start the download process of the thread on the corresponding thread information line.

This tool supports up to 8 threads to download, based on software running stability considerations, it would be best six threads running.



Pic 14

8 Test Result

And other production line download tool, this download tool after the download failed or successful "state (P / F)" column corresponding to the position of the message will become successful (green) or failure (shown in red)

After the download is complete phone is black screen, built-in battery project requires a long press to boot, non-built-in battery data items need to unplug the data catch and battery re-boot.

9 Download Except Process

Encountered in the process of download abnormal situation lead to the upgrade fails,

Mobile phones can't boot ,Insert USB Cable,Open Device Manage, Double click the red part of

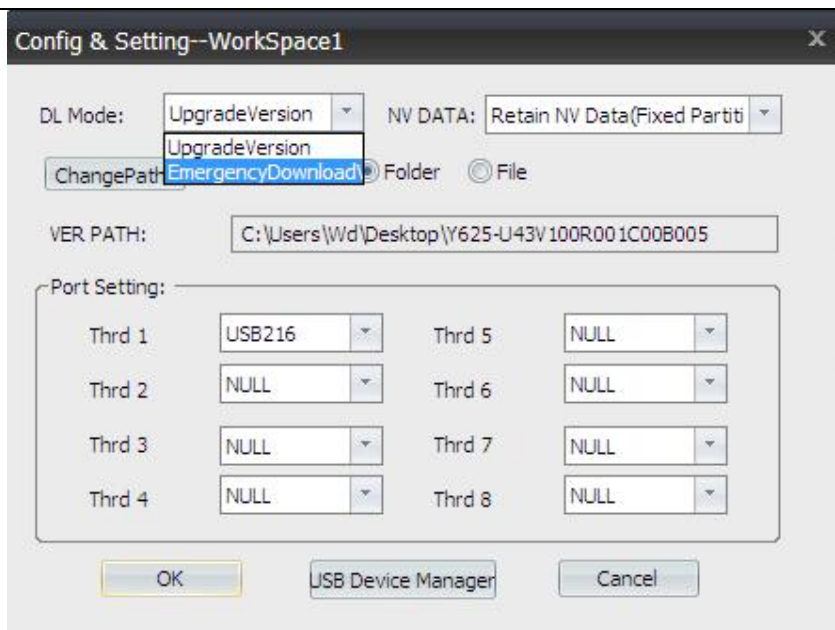
the picture, display driver information, If there is a failure of the 9008 said the mobile phone has been upgraded, This is Emergency download, Appear such circumstance needs the following upgrade.



Pic16

9.1 Configure

Download download mode to choose empty area, port configuration configuration is the same as 6.2, path selection software.



Pic 17

10 FAQ

(1) No Phone

Device Manager has a port, but the tool still shows No Phone, because there may be other tools occupy Diag port.

Investigation as follows:

The First Step: Please see if there is open to other PC side tools such as QPST and other tools

on the computer. Yes please turn off.

The Second Step: See the end of the process there is no tool out of the high-pass process,

such as QPSTServer.exe or emmcdownload.exe Qualcomm and other similar tools

process. Yes please end out these processes.

emmcswdownload.exe	Administrator	00	9,024 K
QPSTServer.exe	Administrator	00	13,916 K

Third step, enter engineering instruction ##### 8787 ##### 7878 # # and turn off the phone

Log. .

The fourth step, redisconnect the phone, power, re-open the tool, and then connect the phone.

The fifth step, if it can not resolve. Please restart your computer and then connect your phone

to open the tool to try.

(2) upgrade mode switch failure

Make ensure that before upgrading T card is not inserted, the investigation is as follows:

Step one: Open the Device Manager to see whether the port to see if a drive is not installed.

Step Two: Check the battery, if the battery is low, the switch no device (the driver has not been WHQL certified, need to manually update drivers)

Step third: USB cable may be connected to the front USB port on the computer, hanging dead after switching USB ports. Please plugged into the rear USB port

(3) Manually update drivers

Automatically after the installation is complete driver, if the driver has not been certified WHQL, following dialog box will pop up:

YEP Confidential



Click Next:



Automatic install:



YEP Confidential