



1. Technical Specifications :

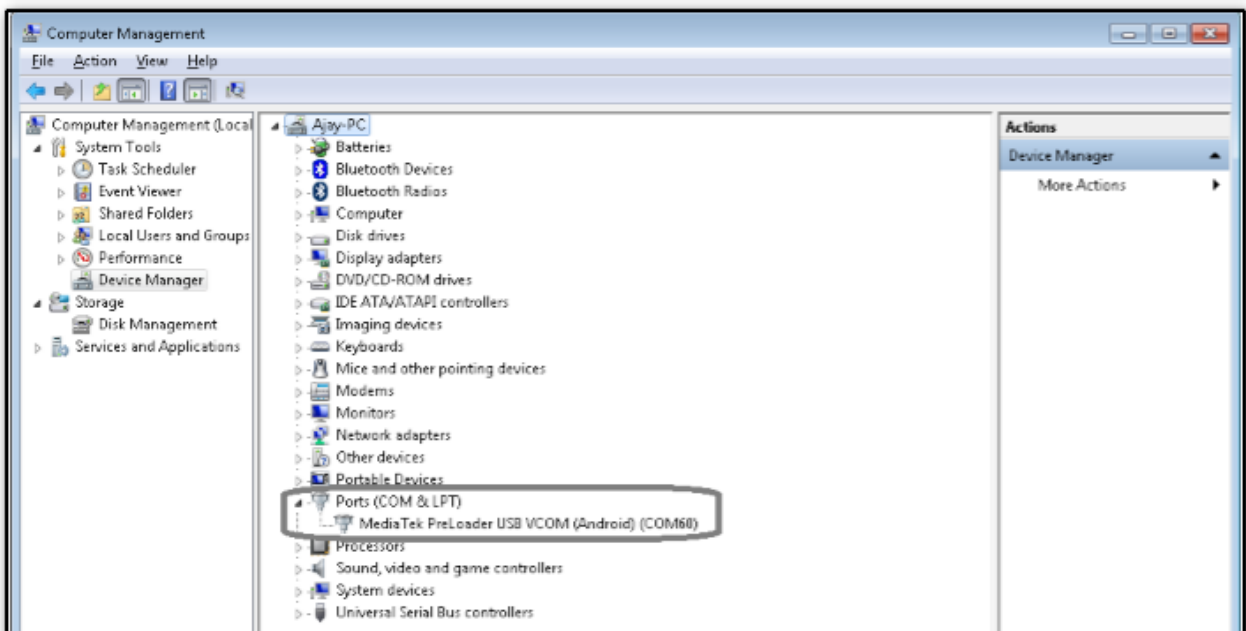
| Particular | Remarks |
|-------------------------|---|
| Key Matrix For Flashing | NA |
| Chipset | MT6589 |
| Android Version | Android 4.4 |
| Frequency | GSM : 900/1800/1900MHz UMTS : 900/2100MHz |
| Network Mode | Dual SIM: WCDMA+GSM |
| ROM | 4 GB |
| RAM | 1 GB |
| Internal SD Card memory | 1.4GB for user |
| Expandable Memory | 32GB |
| Factory mode code | *#9527*# |

2. CAUTIONS

- I. Flashing & Servicing must be undertaken by qualified personnel only.
- II. Ensure all work is carried out at an anti-static workstation and that an anti-static wrist strap is worn.
- III. Use only approved Tools & components as specified in the parts list.
- IV. Ensure all components, modules, screws, and insulators are correctly re-fitted after servicing and alignment
- V. Ensure all cables and wires are repositioned correctly if Handset disassembled
- VI. Electrostatic discharge can easily damage the sensitive components of electronic products. Therefore, Service Centre must adhere the precautions which mentioned above.

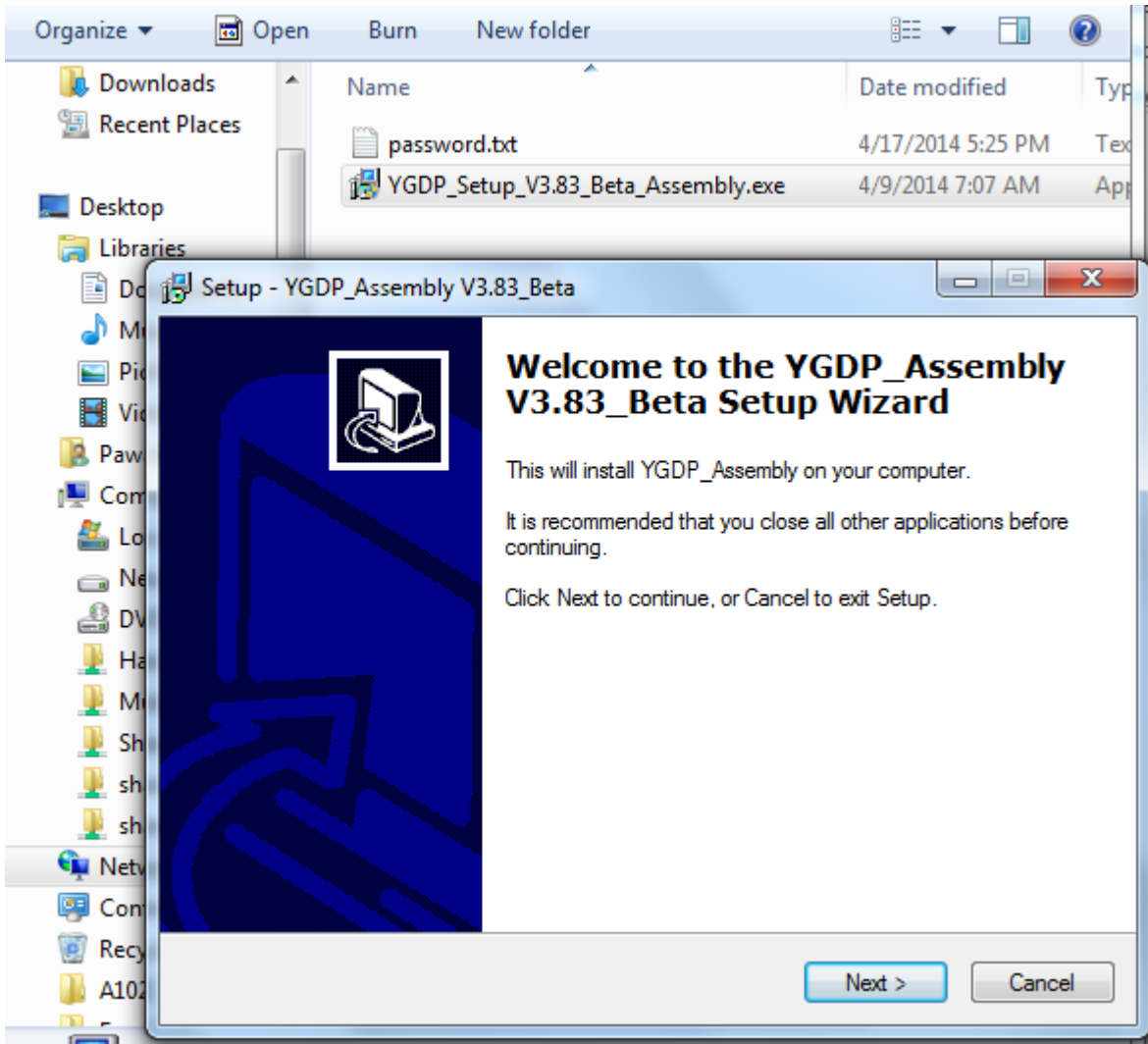
3. Installation of Upgrade Driver

1. Get the upgrade driver files;
2. Power the phone off and connect it to the PC via the data cable of standard configuration; the driver is not installed if it is the first time of upgrade; please install the driver manually, and specify the installation path to the position where the driver is located;
3. After the upgrade driver is successfully installed, the device driver port can be seen in Device Manager:



4. Configuration of Upgrade Platform

- Flash tool setup must install first

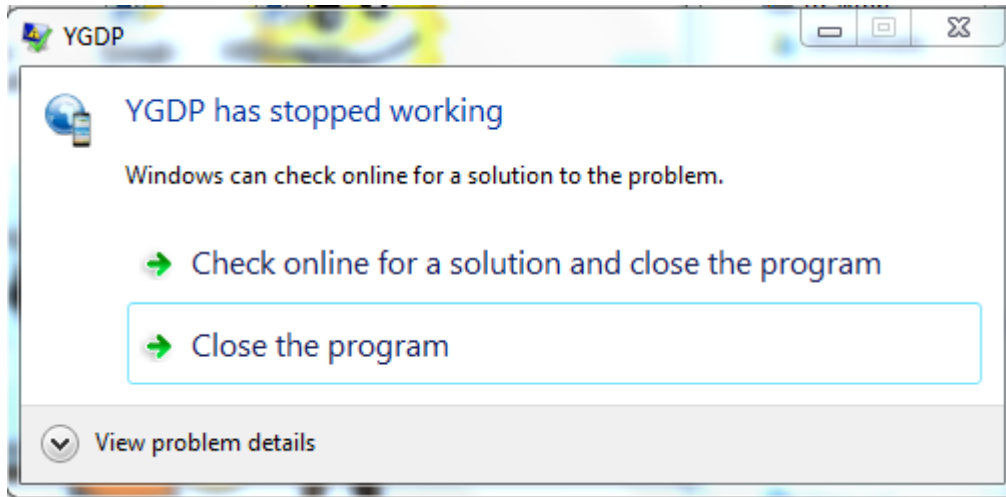


Click on Next > Next > Next to finish installation

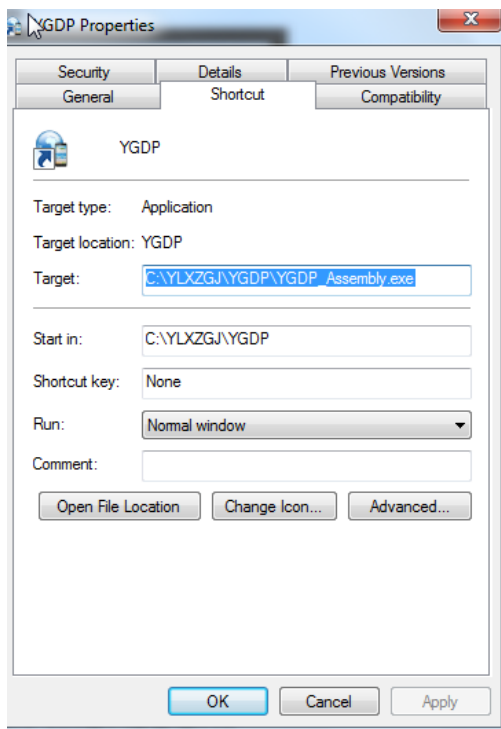
- Flash tool shortcut will available on Desktop



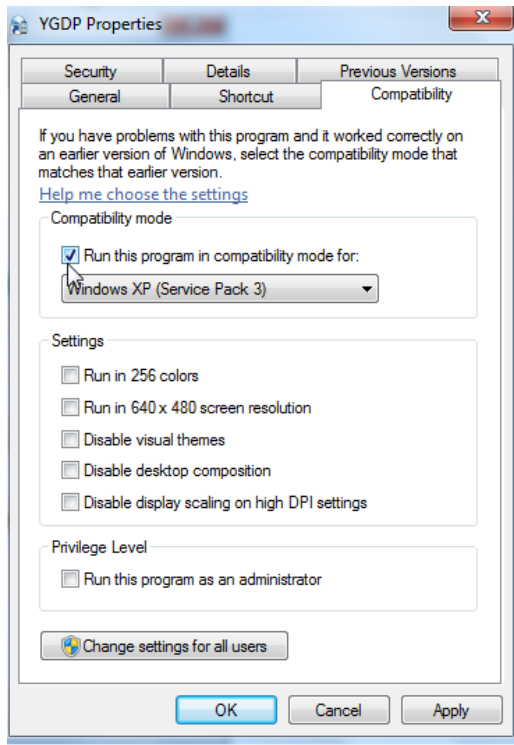
- Once click on above icon , Below error will appear



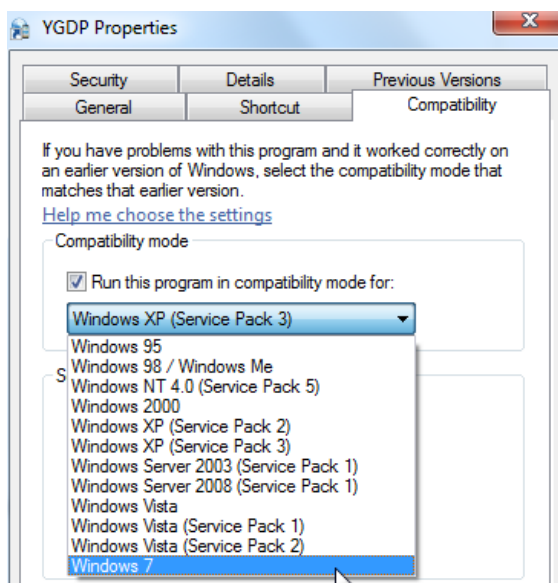
- Right click on icon and go to properties



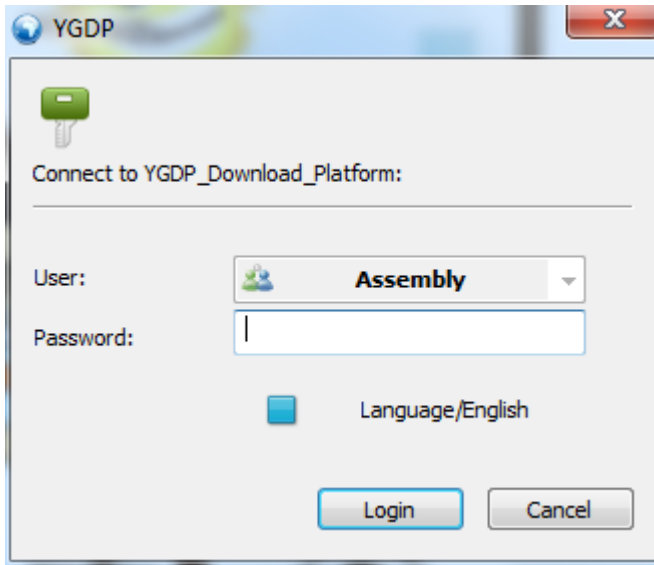
- Go to compatibility > Enable below shown “ Run this program in compatibility mode for :”



- Select system OS , Ex: window 7 > click on Apply > OK



- Now double click on Flash tool icon, below screen will appear, Enter Password: 369



- Open the upgrade platform (password: 9527) to finish the following configuration

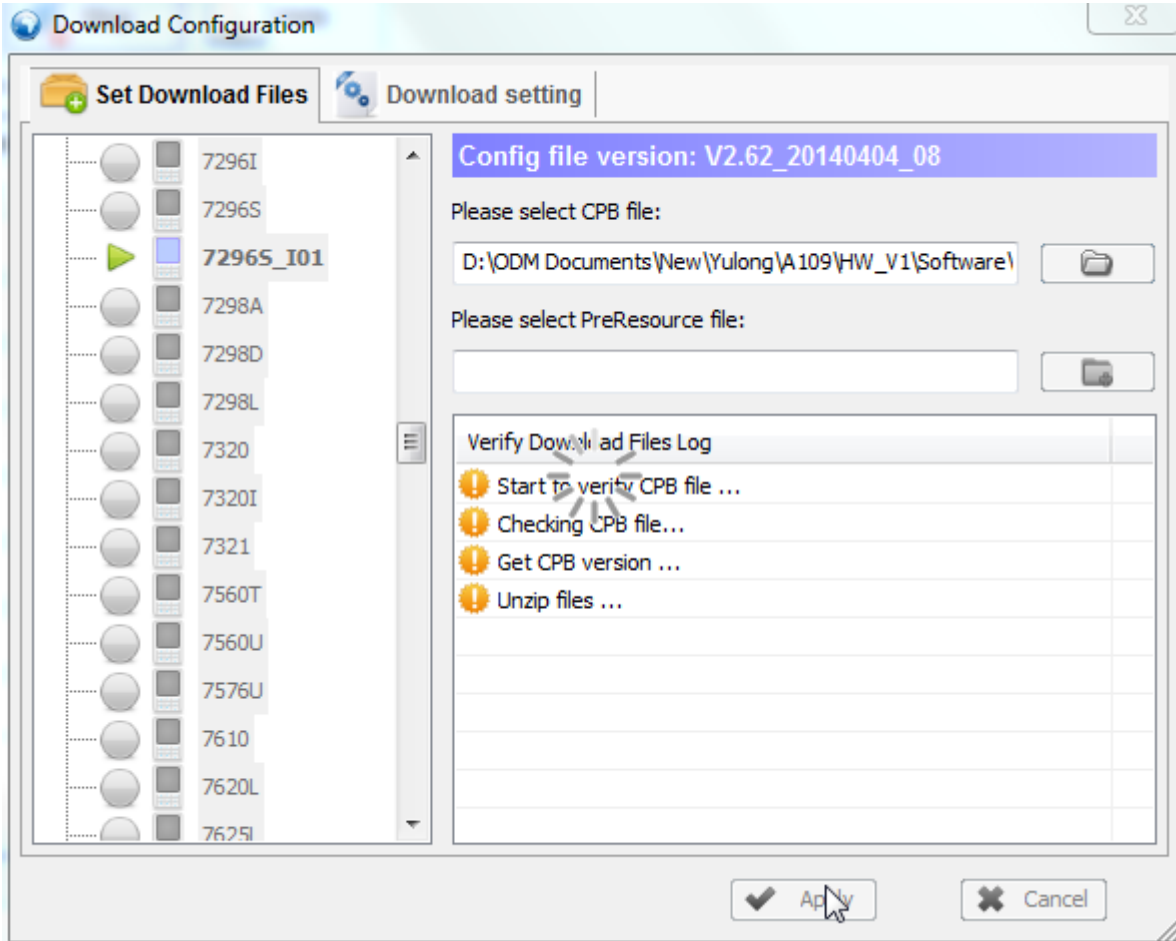
1 Click on Config

2 Select

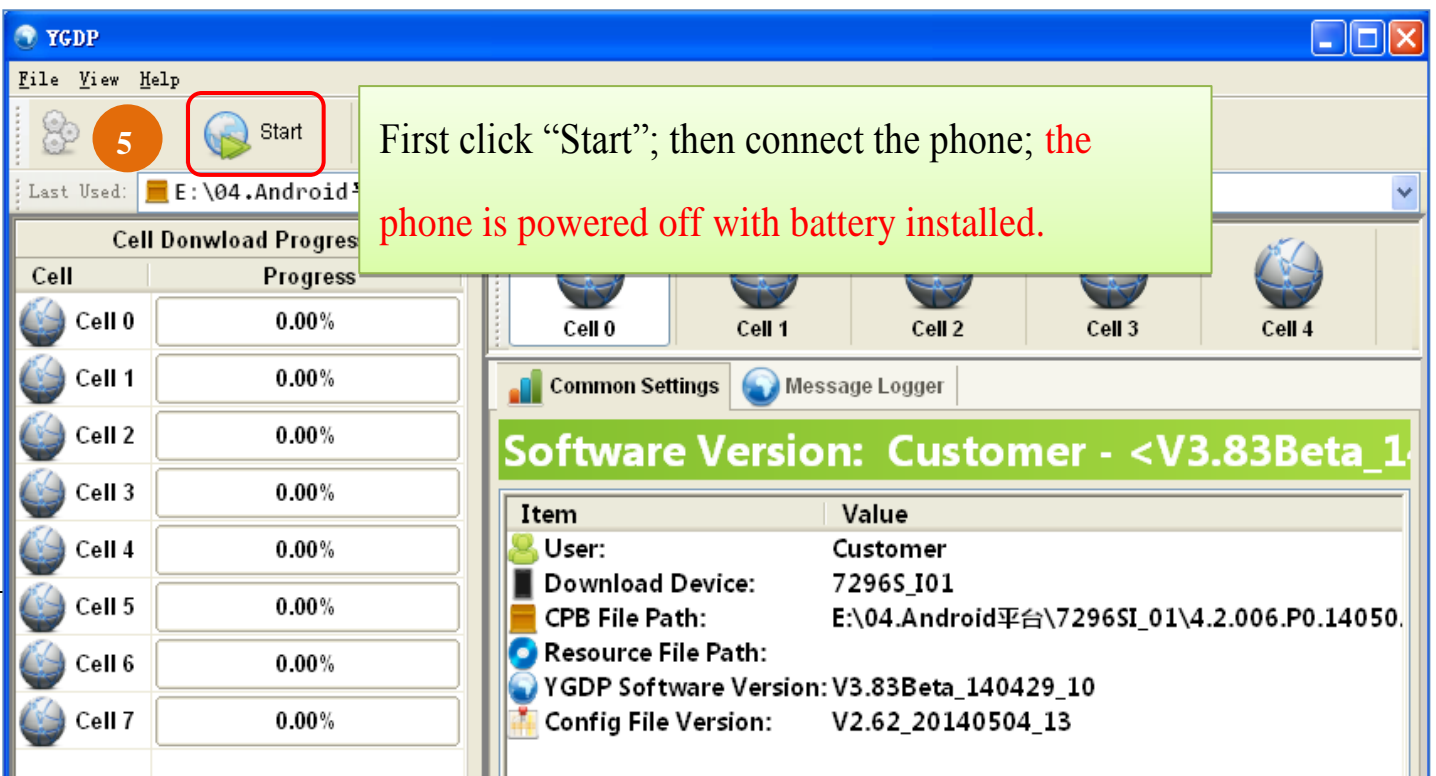
3 Select the upgrade version

4 Click [Apply] to verify the version

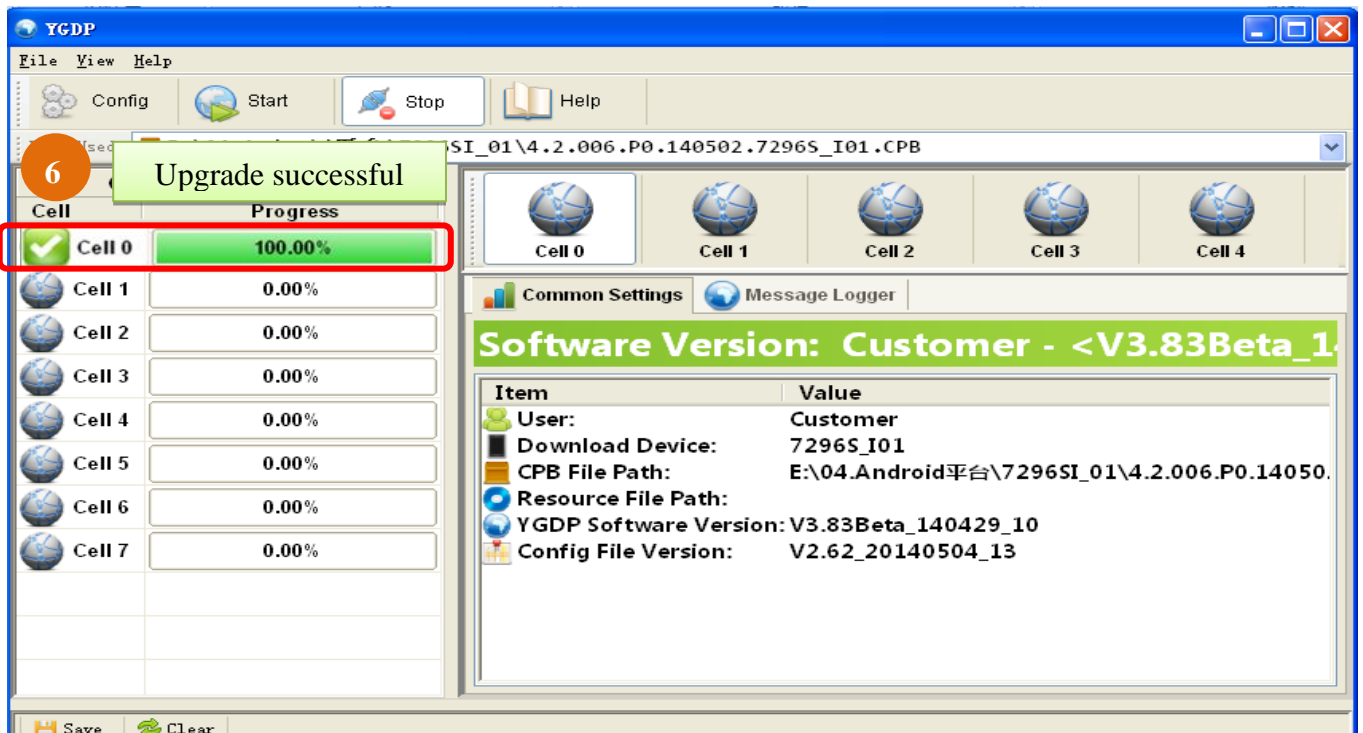
- Below screen will appear, wait till tool verify the files



- Connection of Mobile Phone before Upgrade



➤ Upgrade Successful



After upgrade is finished, input `***#9527#***` to check the version.

Thanks

For any Query or suggestion, Please write to tech.help@micromaxinfo.com